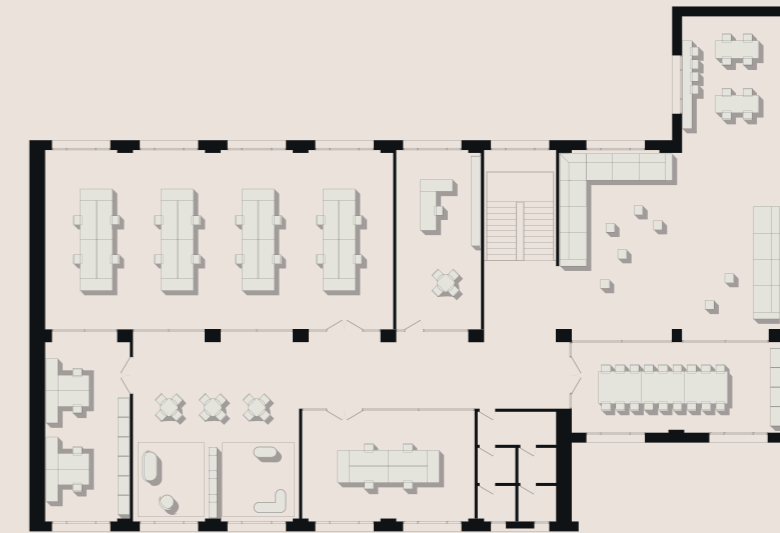


FREZZA



BERLIN

New spaces with retro attitude



space - 800 mq - Kreuzberg

PROJECT

IT

L'idea dello spazio nasce dopo il restauro completo dell'edificio nel cuore di Kreuzberg, un luogo di incontro per innovatori e designer nel quartiere multiculturale di Berlino.

Il progetto di circa 800 metri quadrati, offre ambienti ampi per nuovi tipi di eventi e modi di pensare: grazie a un concetto di open space, il laboratorio può essere utilizzato a seconda delle esigenze e delle attività organizzate al suo interno. Grazie alla flessibilità dell'arredamento, la sala può essere utilizzata come showroom, zona meeting o area di co-working. Integrato da postazioni di lavoro permanenti per i dipendenti, offre le condizioni ideali per consentire alle persone che entrano in contatto con questa realtà di contribuire al suo successo.

EN

The concept for this space, located in the heart of Kreuzberg, was born after the complete renovation of the building in which it's situated. Placed in Berlin's multicultural district, it represents the perfect meeting place for innovators and designers.

The 800 square-metre project offers plenty of space for new types of events and ways of thinking: thanks to an open space concept, the office can be used according to the needs and activities that are organized within it. The flexible furnishings that were chosen for the room allow it to be used as a showroom, meeting area or co-working area. Complemented by permanent workstations for employees, it offers ideal conditions for people who come into contact with the company to contribute to its success.

FR

L'idée de cet espace est née après la rénovation complète du bâtiment situé au cœur de Kreuzberg, un lieu de rencontre pour les innovateurs et les designers dans le quartier multiculturel de Berlin.

Le projet de 800 mètres carrés offre beaucoup d'espace pour de nouveaux types d'événements et de modes de pensée : grâce à un concept d'espace ouvert, le laboratoire peut être utilisé en fonction des besoins et des activités qui y sont organisées. Grâce à son aménagement flexible, la salle peut être utilisée comme salle d'exposition, espace de réunion ou espace de travail. Complété par des postes de travail permanents pour les employés, il offre des conditions idéales pour que les personnes en contact avec l'entreprise puissent contribuer à son succès.



Il progetto soddisfa tutti i requisiti di una cultura lavorativa aperta e inclusiva che dà ai dipendenti la sensazione di un ambiente quasi domestico. Il design degli interni enfatizza il pensiero contemporaneo del lavoro. Gli arredi si sposano alla perfezione con questi concetti, moderni e adattabili alle esigenze in continua evoluzione, rimanendo perfettamente integrati in un contesto di recupero storico.

The project meets all the requirements of an open and inclusive working culture that gives employees the feeling of an almost domestic environment. The interior design emphasizes the contemporary mindset of work. The furniture represents a perfect match for these modern and adaptable concepts while remaining perfectly integrated to the historical renovation context.

La conception répond à toutes les exigences d'une culture de travail ouverte et inclusive qui donne aux employés le sentiment d'un environnement presque domestique. Le design d'intérieur fait ressortir le mode de travail contemporain. Le mobilier correspond parfaitement à ces concepts, moderne et adaptable à l'évolution des besoins, tout en restant parfaitement intégré dans un contexte de récupération historique.

Scrivania manageriale:
struttura in metallo verniciato goffrato grigio verdastro RAL 7009, piani in melaminico noce con bordo grigio verdastro, schermo rivestito in tessuto King Flex XFBX.

Managerial desk:
metal structure painted embossed green grey RAL 7009, walnut melamine tops with green grey edge, screen upholstered in King Flex XFBX fabric.

Bureau manager:
structure en métal verni gaufré gris verdâtre RAL 7009, plateaux en mélamine noyer avec bord gris verdâtre, panneau écran revêtu en tissu King Flex XFBX.

Phylo:
libreria con struttura e schienle in metallo verniciato goffrato grigio verdastro RAL 7009. Ripiani, schienle e contenitori in melaminico noce.

Phylo:
bookcase with structure and backs in green grey RAL 7009 embossed painted metal. Shelves, backs and storage units in walnut melamine.

Phylo:
bibliothèque avec structure et dos en métal verni gaufré gris verdâtre RAL 7009. Étagères, dos et conteneur en mélamine noyer.

Kiku Black Mesh:
seduta operativa con schienale in rete Polo RPZO e tessuto Rondo ROR1.

Kiku Black Mesh:
task chair with Polo RPZO mesh backrest and Rondo ROR1 fabric.

Kiku Black Mesh:
siège bureau avec dossier en résille Polo RPZO et tissu Rondo ROR1.



Tavolo riunione:

struttura in metallo verniciato goffrato grigio verdastro RAL 7009, piani in melaminico noce.

Yo Plastic:

seduta multifunzione con monoscocca in polipropilene colore L4G5 (RAL 7009). Telaio a slitta in acciaio verniciato goffrato grigio verdastro RAL 7009.

Meeting table:

metal structure painted embossed green grey RAL 7009, walnut melamine tops.

Yo Plastic:

multipurpose chair with polypropylene unibody colour L4G5 (RAL 7009). Steel cantilever frame painted embossed green grey RAL 7009.



Table réunion:

structure en métal verni gaufré gris verdâtre RAL 7009, plateaux en mélamine noyer.

Yo Plastic:

chaise polyvalente avec monocoque en polypropylène couleur L4G5 (RAL 7009). Piètement luge en acier verni gaufré gris verdâtre RAL 7009.



Bench:

struttura in metallo verniciato gofrato grigio verdastro RAL 7009, piani in melaminico noce, schermi rivestiti in tessuto King Flex XFBX.

Kiku Black Mesh:

seduta operativa con schienale in rete Polo RPZO e tessuto Rondo ROR1.

Bench desk:

metal structure painted embossed green grey RAL 7009, walnut melamine tops, screens upholstered in King Flex XFBX fabric.

Kiku Black Mesh:

task chair with Polo RPZO mesh backrest and Rondo ROR1 fabric.

Bureau double:

structure en métal verni gaufré gris verdâtre RAL 7009, plateaux en mélamine noyer, panneaux écran revêtus en tissu King Flex XFBX.

Kiku Black Mesh:

siège bureau avec dossier en résille Polo RPZO et tissu Rondo ROR1.

Scrivania manageriale:

struttura in metallo verniciato goffrato grigio verdastro RAL 7009, piano scrivania e piano allungo in melaminico noce con bordo grigio verdastro, gonna in melaminico noce.

Kiku Black Fabric:

seduta operativa rivestita in tessuto Rondo ROM3.

Managerial desk:

metal structure painted embossed green grey RAL 7009, desk top and return top in walnut melamine with green grey edge, modesty panel in walnut melamine.

Kiku Black Fabric:

task chair upholstered in Rondo ROM3 fabric.

Bureau manager:

structure en métal verni gaufré gris verdâtre RAL 7009, plateau bureau et plateau retour en mélamine noyer avec bord gris verdâtre, voile de fond en mélamine noyer.

Kiku Black Fabric:

siège bureau revêtu en tissu Rondo ROM3.

**Nomad table:**

tavolo mobile su ruote con struttura in metallo verniciato goffrato grigio verdastro RAL 7009, piano in melaminico noce.

Yo Stool:

sgabello rivestito in tessuto Rondo ROGO. Telaio a litta in acciaio verniciato goffrato nero RAL 9005.

Nomad table:

movable table on castors with metal structure painted embossed green grey RAL 7009, walnut melamine top.

Yo Stool:

stool upholstered in Rondo ROGO fabric. Steel cantilever frame painted embossed black RAL 9005.

Nomad table:

table mobile sur roulettes avec structure en métal verni gaufré gris verdâtre RAL 7009, plateau en mélamine noyer.

Yo Stool:

tabouret revêtu en tissu Rondo ROGO. Piètement luge en acier verni gaufré noir RAL 9005.





Mediawalk L. 100 cm:
 pannello mobile multifunzione su ruote,
 struttura in metallo verniciato gofrato grigio
 verdastro RAL 7009, pannello lavagna nera.

Mediawalk L. 170 cm:
 pannello mobile multifunzione su ruote,
 struttura in metallo verniciato gofrato grigio
 verdastro RAL 7009, pannello porta TV
 rivestito in tessuto King Flex XFBX.

Mediawalk W. 39"3/8:
 multifunctional movable panel on castors,
 metal structure painted embossed green
 grey RAL 7009, blackboard panel.

Mediawalk W. 66"7/8:
 multifunctional movable panel on castors,
 metal structure painted embossed green
 grey RAL 7009, TV stand panel upholstered
 in King Flex XFBX.

Mediawalk L. 100 cm:
 panneau mobile multifonctionnel sur
 roulettes avec structure en métal verni gaufré
 gris verdâtre RAL 7009 et tableau noir.

Mediawalk L. 170 cm:
 panneau mobile multifonctionnel sur
 roulettes avec structure en métal verni gaufré
 gris verdâtre RAL 7009 et panneau revêtu en
 tissu King Flex XFBX avec support pour TV.

Gradone:
 modulo base, schienale e laterale in
 melaminico cemento.
 Modulo base su ruote in melaminico
 cemento.
 Cuscini in tessuto Rondo R0R1, R0G0.

Gradone:
 base, back and lateral module in
 concrete melamine.
 Base module on castors in concrete
 melamine.
 Fabric Rondo R0R1, R0G0 cushions.

Gradone:
 module base, dossier et latéral en
 mélamine béton.
 Module base avec roulettes en
 mélamine béton.
 Coussins en tissu Rondo R0R1, R0G0.

SCAN



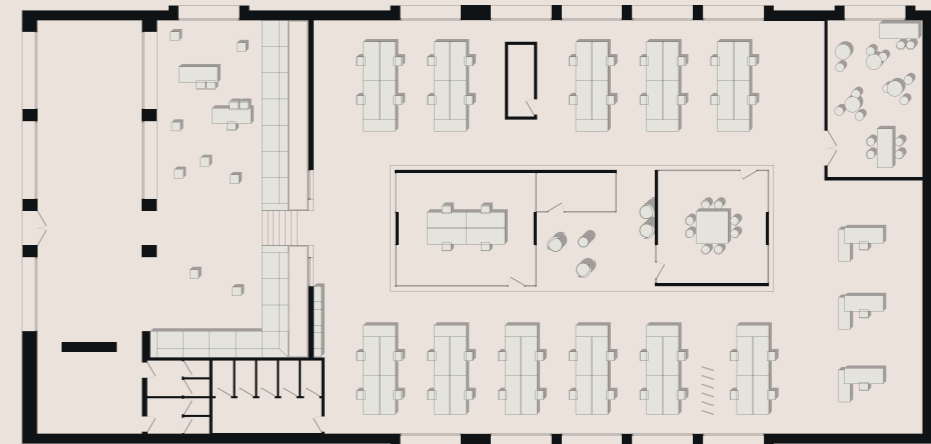
See more about this project

FREZZA



NEW YORK

What a big company needs



space - 1,000 mq - Brooklyn

PROJECT

IT

Progettato come un ambiente su misura per i dipendenti di New York, l'ufficio offre un'esperienza completamente nuova rispetto ad altre realizzazioni.

Il progetto massimizza la vista e la vicinanza a Prospect Park, creando uno spazio di lavoro fortemente caratterizzato e legato a Brooklyn. La location ha un design moderno che insieme a una palette di colori minimalista accentua il volume centrale di colore blu. Le postazioni distribuite lungo tutto il corpo centrale dell'edificio, conducono dalla zona direzionale ad uno spazio leggero e arioso dove si trova la zona meeting e conferenze. Una parete scultorea in legno a doghe costituisce un elemento visivo focale, promuovendo un forte collegamento tra gli spazi.

EN

Designed as a customized space for New York employees, this space offers a completely new experience compared to other projects.

The design maximizes the view and proximity to Prospect Park, creating a highly characterized workspace with a strong Brooklyn connection. The space has a modern design that, together with a minimalist colour palette, accentuates the central blue structure. The workstations that are distributed throughout the central part of the building lead from the executive area to a light and airy space where the meeting and conference area is located. A sculptural wooden slat wall creates a focal visual element and promotes a strong connection between the spaces.

FR

Conçu comme un espace personnalisé pour les employés de New York, le bureau offre une expérience totalement nouvelle par rapport aux autres projets. La conception maximise la vue et la proximité du Prospect Park, créant un espace de travail fortement caractérisé par une forte connexion avec Brooklyn. L'espace présente un design moderne qui, associé à une palette de couleurs minimaliste, accentue le volume central en couleur bleu. Les postes de travail, répartis dans le corps central du bâtiment, mènent de la zone exécutive à un espace clair et aéré où se trouve la zone de réunion et de conférence. Un mur sculptural en lattes de bois constitue un élément visuel central, favorisant une connexion forte entre les espaces.



Le aree di collaborazione sono distribuite tra le postazioni di lavoro e gli uffici privati per creare percorsi che conducono a diverse zone esperienziali. Tra queste, spazi come una sala relax, una sala musicale, una sala di meditazione e una learning lounge, tutte progettate per il benessere e per migliorare il modo in cui i dipendenti possono lavorare.

Collaboration areas are distributed between workstations and private offices to create pathways that lead to different experiential areas. These spaces include a relaxation room, a music room, a meditation room and a learning lounge, all designed to guarantee well-being and enhance the way employees work.

Les zones de collaboration sont réparties entre les postes de travail et les bureaux privés afin de créer des parcours menant à différents domaines d'expérience. Surtouts, une salle de relaxation, une salle de musique, une salle de méditation et un salon d'apprentissage, tous conçus pour le bien-être et pour améliorer la façon dont les employés peuvent travailler.

Bench:

struttura in metallo verniciato gofrato bianco RAL 9010, piani in melaminico bianco, schermi rivestiti in tessuto King Flex XFH6, mobili portanti con ante scorrevoli in melaminico bianco.

Kiku White Mesh:

seduta operativa con schienale in rete Polo RPZ0 e tessuto King Flex XFZ0.

Bench desk:

metal structure painted embossed white RAL 9010, white melamine tops, screens upholstered in King Flex XFH6 fabric, white melamine supporting service units with sliding doors.

Kiku White Mesh:

task chair with Polo RPZ0 mesh backrest and King Flex XFZ0 fabric.

Bureau double:

structure en métal verni gaufré blanc RAL 9010, plateaux en mélamine blanc, panneaux écran revêtus en tissu King Flex XFH6, meubles de service portants avec portes coulissantes en mélamine blanche.

Kiku White Mesh:

siège bureau avec dossier en résille Polo RPZ0 et tissu King Flex XFZ0.



Scrivania:
struttura in metallo verniciato goffrato
bianco RAL 9010, piano in melaminico
cemento, mobile di servizio portante in
melaminico bianco con ante scorrevoli.

Desk:
*metal structure painted embossed white
RAL 9010, concrete melamine top, white
melamine supporting service unit with
sliding doors.*

Bureau:
*structure en métal verni gaufré blanc
RAL 9010, plateau en mélamine béton,
meuble de service portant en mélamine
blanche avec portes coulissantes.*

Kiku White Fabric:
seduta operativa rivestita in tessuto
King Flex XFZO.

Kiku White Fabric:
*task chair upholstered in King Flex
XFZO fabric.*

Kiku White Fabric:
*siège bureau revêtu et tissu
King Flex XFZO.*





Bench:

struttura in metallo verniciato goffrato bianco RAL 9010, piani in melaminico bianco, schermi rivestiti in tessuto King Flex XFH6, cassettiere portanti in melaminico bianco.

Kiku White Mesh:

seduta operativa con schienale in rete Polo RPGR e tessuto King Flex XFGS.

Bench desk:

metal structure painted embossed white RAL 9010, white melamine tops, screens upholstered in King Flex XFH6 fabric, white melamine supporting pedestals.

Kiku White Mesh:

task chair with Polo RPGR mesh backrest and King Flex XFGS fabric.

Bureau double:

structure en métal verni gaufré blanc RAL 9010, plateaux en mélamine blanche, panneaux écran revêtus en tissu King Flex XFH6, caissons portants en mélamine blanche.

Kiku White Mesh:

siège bureau avec dossier en résille Polo RPGR et tissu King Flex XFGS.

Tavolo alto:

struttura in metallo verniciato goffrato bianco RAL 9010, piano in melaminico cemento.

Karl:

sgabello con elevazione a gas rivestito in tessuto Steelcut Trio 3 SYAZ.

High table:

metal structure painted embossed white RAL 9010, concrete melamine top.

Karl:

stool with gas lift upholstered in Steelcut Trio 3 SYAZ fabric.

Table haute:

structure en métal verni gaufré blanc RAL 9010, plateau en mélamine béton.

Karl:

tabouret avec élévation par vérin à gaz revêtu en tissu Steelcut Trio 3 SYAZ.

Radar poltrone e pouf:
rivestiti in tessuto Remix 3 RIB4.

Tavolo Break Out:
piano in mdf laccato nero opaco RAL 9011, struttura in metallo verniciato nero RAL 9005.

Radar armchairs e pouf:
upholstered in Remix 3 RIB4 fabric.

Break Out table:
matt lacquered RAL 9011 mdf top, metal structure painted black RAL 9005.

Radar fauteuil et pouf:
revêtus en tissu Remix 3 RIB4.

Table Break Out:
plateau en mdf laqué mat RAL 9011, structure en métal verni noir RAL 9005.

Nomad table:
tavolo mobile su ruote, struttura in metallo verniciato goffrato bianco RAL 9010, piano in melaminico bianco.

Karl:
sgabello con elevazione a gas rivestito in tessuto Focus Melange R8B2.

Nomad table:
movable table on castors, metal structure painted embossed white RAL 9010, white melamine top.

Karl:
stool with gas lift upholstered in Focus Melange R8B2 fabric.

Nomad table:
table mobile sur roulettes, structure en métal verni gaufré blanc RAL 9010, plateau en mélamine blanc.

Karl:
tabouret avec élévation par vérin à gaz revêtu en tissu Focus Melange R8B2.



Flamingo:
tavolo con piano in HPL nero e struttura in acciaio verniciato nero RAL 9005.

C1.8:
pouf small e medium rivestiti in tessuto Focus Melange R8B2.

Flamingo:
table with black HPL top and steel structure painted black RAL 9005.

C1.8:
small and medium poufs upholstered in Focus Melange R8B2 fabric.

Flamingo:
table avec plateau en HPL noir, structure en acier verni noir RAL 9005.

C1.8:
poufs petit et moyen revêtus en tissu Focus Melange R8B2.



Nomad table:

tavolo mobile su ruote, struttura in metallo verniciato goffrato bianco RAL 9010, piano in melaminico bianco.

Karl:

sgabello con elevazione a gas rivestito in tessuto Steelcut Trio 3 SYBB.

Gradone:

moduli base, schienale e laterale in melaminico bianco.
Modulo base su ruote in melaminico olmo chiaro.
Cuscini rivestiti in tessuto Steelcut Trio 3 SYBB.

Nomad table:

movable table on castors, metal structure painted embossed white RAL 9010, white melamine top.

Karl:

stool with gas lift upholstered in Steelcut Trio 3 SYBB fabric.

Gradone:

white melamine base, back and lateral modules.
Light elm melamine base modules on castors.
Cushions upholstered in Steelcut Trio 3 SYBB fabric.

Nomad table:

table mobile sur roulettes, structure en métal verni gaufré blanc RAL 9010, plateau en mélamine blanc.

Karl:

tabouret avec élévation par vérin à gaz revêtu en tissu Steelcut Trio 3 SYBB.

Gradone:

modules base, dossier et latéral en mélamine blanche.
Modules base sur roulettes en mélamine orme clair.
Coussins revêtus en tissu Steelcut Trio 3 SYBB.



Mediawalk:

pannello mobile multifunzione su ruote, struttura in metallo verniciato goffrato bianco RAL 9010, lavagna bianca e pannello porta TV rivestito in tessuto King Flex XFH6.

Mediawalk:

multifunctional movable panel on castors, metal structure painted embossed white RAL 9010, white board and TV stand panel upholstered in King Flex XFH6 fabric.

Mediawalk:

panneau mobile multifonctionnel sur roulettes, structure en métal verni gaufré blanc RAL 9010, tableau blanc et panneau porte monitor revêtu en tissu King Flex XFH6.

SCAN



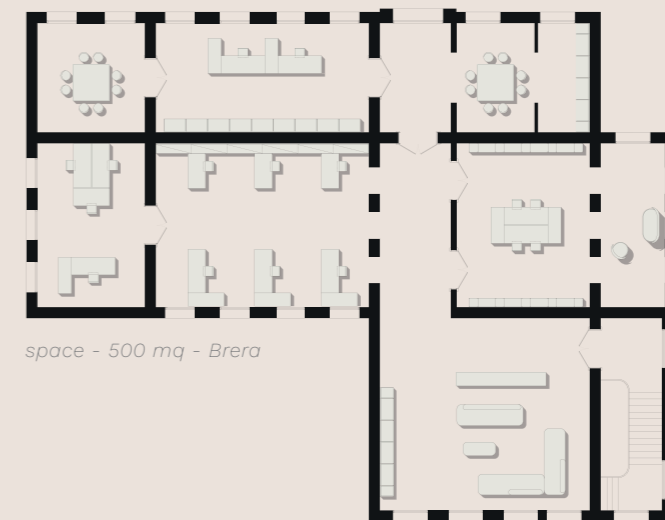
See more about this project

FREZZA



MILANO

Charming office in the city of design



space - 500 mq - Brera

PROJECT

IT

Il brief era di creare uno spazio collaborativo dove colleghi e partner potessero riunirsi per condividere idee e mostrare il loro lavoro, degli uffici che avessero un'atmosfera informale, elegante e familiare. L'ambiente è composto da diverse zone: l'ingresso della sede si affaccia su via Pontaccio, nel centro di Milano, con un'intera facciata di grandi vetrate che portano all'interno degli uffici le sensazioni e gli umori della capitale del design. Per distaccarsi dall'esperienza dei normali uffici, l'area della reception è stata progettata per assomigliare più a un soggiorno, con divano al centro e scaffali alle pareti, in questo modo la location diventa molto più accogliente e può essere utilizzata anche per riunioni e incontri di gruppo.

EN

The brief was to create a collaborative space where colleagues and partners could come together to share ideas and showcase their work, with offices that had an informal, elegant and homely atmosphere. The environment is composed of different zones: the entrance to the office faces Via Pontaccio, in the centre of Milan, where an entire façade of large windows brings the feel and mood of the design capital into the offices. In order to break away from the normal office experience, the reception area is designed to look more like a living room, with a sofa in the centre and bookshelves on the walls. This makes the location much more welcoming and can also be used for meetings and group gatherings.

FR

La mission était de créer un espace collaboratif où les collègues et les partenaires pourraient se réunir pour partager des idées et présenter leur travail, et aussi des bureaux avec une atmosphère informelle, élégante et familière. L'espace est composé de différentes zones : l'entrée de l'espace donne sur la Via Pontaccio, au centre de Milan, avec une façade entière de grandes fenêtres qui apportent dans les bureaux les impressions et l'atmosphère de la capitale du design. Afin de rompre avec l'expérience habituelle des bureaux, la zone de réception a été conçue pour ressembler plutôt à un salon, avec un canapé au centre et des étagères sur les murs, de sorte que l'espace devient beaucoup plus accueillant et peut également être utilisé pour des réunions et des rencontres de groupe.



Lo spazio è stato progettato per essere luminoso, chiaro e armonizzato, mentre diventa lentamente più scuro e intimo man mano che ci si muove attraverso una serie di strette aperture di porte che si estendono dal pavimento al soffitto, ampliando il senso di altezza dell'ambiente. L'architettura interna è minimalista, ma attenta a ogni minimo dettaglio.

The space is designed to be bright, airy and harmonious, while slowly becoming darker and more private as one moves through a series of narrow door openings that extend from floor to ceiling which expand the sense of height of the room. The interior architecture is minimalist but attentive to every detail.

L'espace est conçu pour être lumineux, clair et harmonisé, tout en devenant lentement plus sombre et plus intime au fur et à mesure que l'on se déplace à travers une série d'étroites ouvertures de portes qui s'étendent du sol au plafond, augmentant ainsi la sensation de hauteur de l'espace. L'architecture intérieure est minimaliste, mais attentive à chaque détail.

Scrivanie:
struttura in metallo verniciato gofrato nero RAL 9005, piani in melaminico olmo chiaro.

Workwall:
boiserie con pannelli in melaminico bianco e pensili in melaminico tortora.

Key:
seduta direzionale rivestita in tessuto Remix 3 RIH2.

Desks:
metal structure painted embossed black RAL 9005, light elm melamine tops.

Workwall:
boiserie with white melamine panels and dove grey melamine wall units.

Key:
executive chair upholstered in Remix 3 RIH2 fabric.

Bureaux:
structure en métal verni gaufré RAL 9005, plateaux en mélamine orme clair.

Workwall:
boiserie avec panneaux en mélamine blanche et cabinets suspendus en mélamine gris taupe.

Key:
siège direction revêtu en tissu Remix 3 RIH2.



Tavolo riunione:

struttura in metallo verniciato goffrato nero RAL 9005, piano ed estensioni in melaminico olmo chiaro con bordo nero.

Phylo:

libreria con struttura in metallo verniciato goffrato nero RAL 9005. Schiene in metallo verniciato goffrato nero RAL 9005 e in melaminico olmo chiaro. Ripiani e contenitori in melaminico olmo chiaro.

Key:

seduta direzionale rivestita in pelle primo fiore Elmosoft ELMG.

Meeting table:

metal structure painted embossed black RAL 9005, light elm with black edge melamine top and extensions.

Phylo:

bookcase with metal structure painted embossed black RAL 9005. Backs in metal painted embossed black RAL 9005 and in light elm melamine. Shelves and storage units in light elm melamine.

Key:

executive chair upholstered in Elmosoft ELMG full-grain leather.



Table réunion:

structure en métal verni gaufré noir RAL 9005, plateau et extensions en mélamine orme clair avec bord noir.

Phylo:

bibliothèque avec structure en métal verni gaufré noir RAL 9005. Dos en métal verni gaufré noir RAL 9005 et en mélamine orme clair. Étagères et conteneur en mélamine orme clair.

Key:

siège direction revêtu en cuir pleine fleur corrigé ELMG.



Scrivania manageriale:

struttura in metallo verniciato goffrato nero RAL 9005, piano scrivania in melaminico olmo chiaro, piano allungo in vetro acidato lato superiore e verniciato nero lato inferiore con sottopiano in melaminico nero. Gonne in melaminico olmo chiaro.

Key:

seduta direzionale rivestita in pelle primo fiore Elmosoft ELNE.

Managerial desks

metal structure painted embossed black RAL 9005, light elm melamine desk top, return top in etched glass over surface and black painted under surface with black melamine under top. Light elm melamine modesty panels.

Key:

executive chair upholstered in Elmosoft ELNE full-grain leather.

Bureau managerial:

structure en métal verni gaufré noir RAL 9005, plateau bureau en mélamine orme clair, plateau retour en verre dépoli côté supérieur et verni noir côté inférieur avec sous-plateau en mélamine noir. Voile de fond en mélamine orme clair.

Key:

siège direction revêtu en cuir pleine fleur Elmosoft ELNE.



Bench:

struttura in metallo verniciato gofrato nero RAL 9005, piani in melaminico olmo chiaro. Schermi rivestiti in tessuto Jet JTW3. Accessori in metallo verniciato nero RAL 9005.

Key:

seduta direzionale rivestita in pelle primo fiore Elmosoft ELNE.

Bench desk:

metal structure painted embossed black RAL 9005, light elm melamine tops. Screens upholstered in Jet JTW3 fabric. Black RAL 9005 painted metal accessories.

Key:

executive chair upholstered in Elmosoft ELNE full-grain leather.

Bureau 3-places:

structure en métal verni gaufré noir RAL 9005, plateaux en mélamine orme clair. Panneaux écran revêtus en tissu Jet JTW3. Accessoires en métal verni noir RAL 9005.

Key:

siège direction revêtu en cuir pleine fleur Elmosoft ELNE.



Tavolo riunione:
struttura in metallo verniciato goffrato
nero RAL 9005, piano in melaminico nero.

Karl:
sgabello rivestito in tessuto Remix 3 RIGC.

Meeting table:
metal structure painted embossed
black RAL 9005, black melamine top.

Karl:
stool upholstered in Remix 3 RIGC fabric.

Table réunion:
structure en métal verni gaufré noir
RAL 9005, plateau en mélamine noire.

Karl:
tabouret revêtu en tissu Remix 3 RIGC.



Afina divano modulare:
schienale: Steelcut Trio 3 SYBB,
seduta: Steelcut Trio SYGC.

Afina tavolino caffè:
struttura in metallo verniciato bianco
RAL 9010, piano in vetro acidato lato
superiore e verniciato bianco lato
inferiore.

Afina modular sofa:
backrest: Steelcut Trio 3 SYBB,
seat: Steelcut Trio 3 SYGC.

Afina coffee table:
metal structure painted white RAL
9010, etched glass over surface and
white painted under surface.

Afina canapé modulaire:
dossier: Steelcut Trio 3 SYBB,
assise: Steelcut Trio 3 SYGC.

Afina table basse:
structure en métal verni blanc RAL
9010, plateau en verre dépoli côté
supérieur et verni blanc côté inférieur.

SCAN



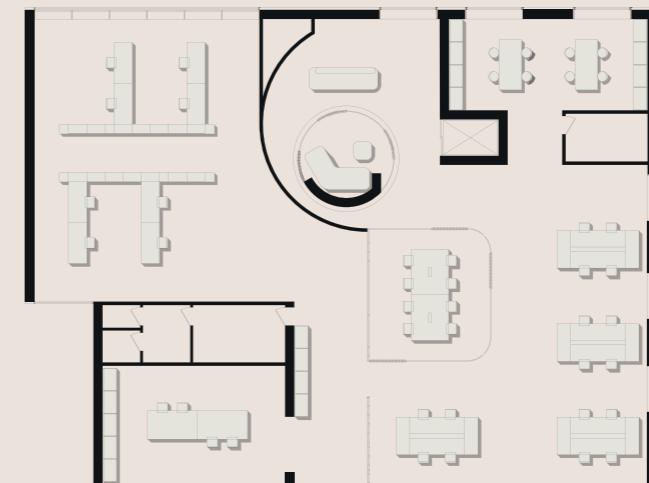
See more about this project

FREZZA



TOKYO

Into the future without compromise



space - 550 mq - Arakawa

PROJECT

IT

L'uso creativo dei colori, dei percorsi di spostamento intuitivi e l'efficiente disposizione degli spazi di lavoro, definiscono questi uffici rendendoli un esempio chiaro sulla strada da seguire nel futuro della progettazione. Dal punto di vista stilistico, l'obiettivo del progetto era di creare un'area luminosa e chiara, ponendo l'accento sui colori e sui materiali dei volumi principali. E' stata posta molta attenzione al colore e alle composizioni, all'equilibrio dei volumi e alle combinazioni armoniose dei materiali. Parte integrante della progettazione grafica e degli interni è un sistema di navigazione completo, che comprende la segnaletica a pavimento e a parete, integrando degli arredi che si fondono con il progetto spaziale della struttura.

EN

The creative use of colours, intuitive movement paths and the efficient arrangement of workspaces define these offices, making them a clear example of the way forward in design. From a stylistic point of view, the aim of the project was to create a bright and clear area, emphasising the colours and materials of the main volumes. A lot of attention was paid to colour and compositions, the balance of volumes and harmonious combinations of materials. An integral part of the graphic and interior design is a complete navigation system, including floor and wall signage, integrating furniture that blends with the spatial design of the structure.

FR

La mission était de créer un espace collaboratif où les collègues et les partenaires pourraient se réunir pour partager des idées et présenter leur travail, et aussi des bureaux avec une atmosphère informelle, élégante et familière. L'espace est composé de différentes zones : l'entrée de l'espace donne sur la Via Pontaccio, au centre de Milan, avec une façade entière de grandes fenêtres qui apportent dans les bureaux les impressions et l'atmosphère de la capitale du design. Afin de rompre avec l'expérience habituelle des bureaux, la zone de réception a été conçue pour ressembler plutôt à un salon, avec un canapé au centre et des étagères sur les murs, de sorte que l'espace devient beaucoup plus accueillant et peut également être utilisé pour des réunions et des rencontres de groupe.



THE SPACES

Gli spazi sono stati pensati per ospitare i dipendenti in un ambiente accogliente e professionale, con spazi ampi e aperti che all'occorrenza possono essere resi più privati grazie all'utilizzo dei tendaggi. Le aree di lavoro operative sono spezzate da sale riunione e ampie zone relax.

The spaces are designed to welcome employees in a cosy and professional environment, with large open spaces that can be made more private if necessary through the use of curtains. The operational work areas are broken up by meeting rooms and large relax areas.

Les espaces sont conçus pour accueillir les employés dans un environnement confortable et professionnel, avec de grands espaces ouverts qui peuvent être rendus plus privés si nécessaire grâce à des rideaux. Les zones de travail opérationnelles sont séparées par des salles de réunion et de grands espaces de détente.

Bench:
struttura in metallo verniciato gofrato grigio verdastro RAL 7009, piani in melaminico rovere.

Takk:
seduta operativa con schienale in rete Spin S1G4 e tessuto Rondo ROGO.

Yo Plastic:
seduta multifunzione con monoscocca in polipropilene colore L4V0 (RAL 1006). Telaio a slitta in acciaio verniciato gofrato giallo mais (RAL 1006).

Bench desk:
metal structure painted embossed green grey RAL 7009, oak melamine tops.

Takk:
task chair with Spin S1G4 mesh backrest and Rondo ROGO fabric.

Yo Plastic:
multipurpose chair with polypropylene unibody colour L4V0 (RAL 1006). Steel cantilever frame painted embossed maize yellow (RAL 1006).

Bureau double:
structure en métal verni gaufré gris verdâtre RAL 7009, plateaux en mélamine chêne.

Takk:
siège bureau avec dossier en résille Spin S1G4 et tissu Rondo ROGO.

Yo Plastic:
chaise polyvalente avec monocoque en polypropylène couleur L4V0 (RAL 1006). Piètement luge en acier verni gaufré jaune mais (RAL 1006).

Afina:
divano modulare rivestito in tessuto
Go Check T9G0.

Afina tavolino caffè:
struttura in metallo verniciato
grigio verdastro RAL 7009, piano in
melaminico rovere.

Afina:
modular sofa upholstered in Go Check
T9G0 fabric.

Afina coffee table:
metal structure painted green grey RAL
7009, oak melamine top.

Afina:
canapé modulaire revêtu en tissu Go
Check T9G0.

Afina table basse:
structure en métal verni gris verdâtre
RAL 7009, plateau en mélamine chêne.



Library:
struttura in melaminico cemento con
contenitori in feltro grigio.

Library:
concrete melamine structure with grey
felt container.

Library:
structure en mélamine béton avec
conteneur en feutre gris.

**Scrivania:**

scrivanie collegate a libreria Phylo. Struttura in metallo verniciato gofrato grigio verdastro RAL 7009. Piani in melaminico rovere.

Takk:

seduta operativa con schienale in rete Spin S1G4 e tessuto Rondo R0G0.

Desk:

desks linked to Phylo bookcase. Metal structure painted embossed green grey RAL 7009, oak melamine tops.

Takk:

task chair with Spin S1G4 mesh backrest and Rondo R0G0 fabric.

Bureau:

bureaux fixés à la bibliothèque Phylo. Structure en métal verni gaufré gris verdâtre RAL 7009, plateaux en mélamine chêne.

Takk:

siège bureau avec dossier en résille Spin S1G0 et tissu Rondo R0G0.



Phylo:
 libreria con struttura e ripiani in metallo verniciato gofrato grigio verdastro RAL 7009. Contenitori in melaminico rovere e cemento.

Phylo:
 bookcase with metal structure and shelves painted embossed green grey RAL 7009. Oak and concrete melamine containers.

Phylo:
 bibliothèque avec structure et étagères en métal verni gaufré gris verdâtre RAL 7009. Conteneurs en mélamine chêne et béton.

Armadi con ante scorrevoli in melaminico cemento. Porta fiori in melaminico rovere.

Concrete melamine cabinets with sliding doors. Oak melamine flower box.

Armoires avec portes coulissantes en mélamine béton. Bac à fleurs en mélamine chêne.





Tavolo riunione:
struttura in metallo verniciato gofrato grigio verdastro RAL 7009. Piani in melaminico rovere.

Yo Fabric:
seduta multifunzione rivestita in tessuto Go Check T9G0. Telaio a 4 gambe in acciaio verniciato gofrato bianco RAL 9010.

Meeting table:
metal structure painted embossed green grey RAL 7009. Oak melamine tops.

Yo Fabric:
multipurpose chair upholstered in Go Check T9G0 fabric. 4-leg steel frame painted embossed white RAL 9010.

Table réunion:
structure en métal verni gaufré gris verdâtre RAL 7009. Plateaux en mélamine chêne.

Yo Fabric:
chaise polyvalente revêtu en tissu Go Check T9G0. Bâti 4 pieds en acier verni gaufré blanc RAL 9010.



Nomad table:
tavolo mobile su ruote con struttura verniciata goffrata grigio verdastro RAL 7009. Piano in melaminico rovere.

Karl:
sgabelli con elevazione a gas rivestiti in tessuto Chili SOV2.

Nomad table:
movable table on castors with metal structure painted embossed green grey RAL 7009. Oak melamine top.

Karl:
stools with gas lift upholstered in Chili SOV2 fabric.



Nomad table:
table mobile sur roulettes avec structure en métal verni gris verdâtre gaufré RAL 7009. Plateau en mélamine chêne.

Karl:
tabourets avec élévation par vérin à gaz revêtus en tissu Chili SOV2.

SCAN

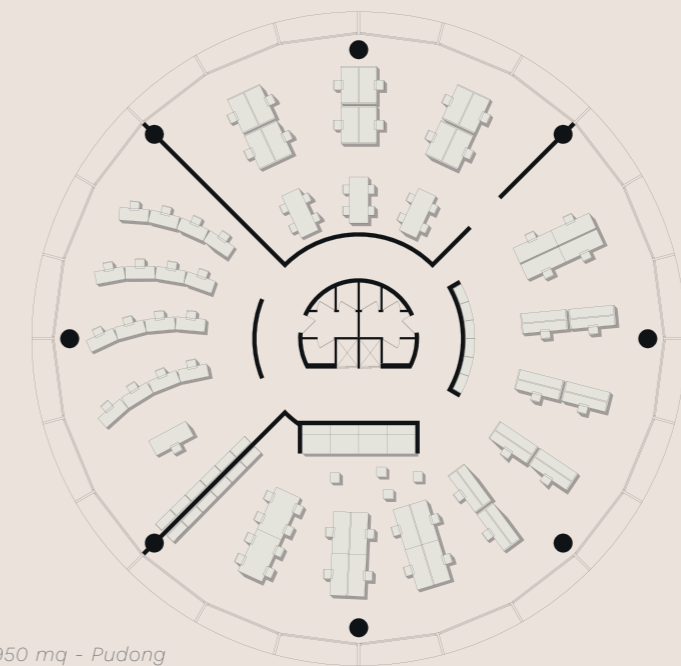


See more about this project



SHANGHAI

Pure, modern and flexible office



space - 950 mq - Pudong

PROJECT

IT

Situato in un nuovo polo creativo nel cuore di Pudong, l'ufficio occupa gli ultimi due piani di un edificio perfettamente cilindrico. Per celebrare le caratteristiche architettoniche del progetto, gli uffici interni sono stati concepiti come uno spazio espositivo e allo stesso tempo operativo. Una struttura in legno a scaffali avvolge il nucleo centrale circolare per racchiudere sale riunioni, uffici e aree relax, mentre le enormi aree che girano attorno al corpo in legno ospitano uffici liberi di essere riconfigurati a seconda delle esigenze, sale meeting ed educative. Tutto il progetto è illuminato dalle grandi vetrate su tutto il perimetro dell'edificio, donando una vista a 360° sulla città.

EN

Located in a new creative hub in the heart of Pudong, the office occupies the top two floors of a perfectly cylindrical building. To celebrate the architectural characteristics of the project, the interior offices were conceived as an exhibition and operational space at the same time. A wooden shelving insert wraps around the circular central core to enclose meeting rooms, offices and relaxation areas, while the huge areas circling the wooden body house offices free to be reconfigured as required, meeting and educational rooms. The whole project is illuminated by the large windows around the perimeter of the building, giving a 360° view of the city.

FR

Situé dans un nouveau pôle créatif au cœur de Pudong, le bureau occupe les deux derniers étages d'un bâtiment parfaitement cylindrique. Pour célébrer les caractéristiques architecturales du projet, les bureaux intérieurs ont été conçus comme un espace d'exposition et d'exploitation à la fois. Une étagère en bois s'enroule autour du noyau central circulaire pour enfermer des salles de réunion, des bureaux et des espaces de détente, tandis que les vastes zones qui entourent le corps en bois abritent des bureaux libres d'être reconfigurés selon les besoins, des salles de réunion et des salles de formation. L'ensemble du projet est éclairé par les grandes fenêtres situées sur le périmètre du bâtiment, offrant ainsi une vue à 360° sur la ville.



Le sale riunioni e gli uffici sono avvolti da un vetro scanalato che garantisce la privacy e inonda di luce gli spazi interni adiacenti, le scrivanie delle aree di lavoro sono postazioni mobili che possono essere spostate e personalizzate dando a chi le utilizza comfort e concentrazione. Aree destinate a diverse funzioni si fondono insieme creando nuove visioni nel mondo dell'ufficio.

The meeting rooms and offices are enveloped in fluted glass that ensures privacy and floods the adjacent interior spaces with light, the desks in the work areas are mobile workstations that can be moved and customised, giving the user comfort and concentration. Areas intended for different functions merge together creating new visions in the office world.

Les salles de réunion et les bureaux sont enveloppés de verre cannelé qui garantit l'intimité et inonde de lumière les espaces intérieurs adjacents. Les bureaux dans les zones de travail sont des postes de travail mobiles qui peuvent être déplacés et personnalisés, offrant à l'utilisateur confort et concentration. Des espaces destinés à des fonctions différentes fusionnent, créant de nouvelles visions dans le monde des bureaux.

Gradone:
moduli base su ruote in melaminico olmo chiaro. Cuscini in tessuto King Flex XFRM.

Mediawalk:
pannello mobile multifunzione su ruote, struttura in metallo verniciato goffrato bianco RAL 9010. Pannello lavagna bianca e pannello porta TV rivestito in tessuto King Flex XFB2.

Gradone:
Light elm melamine base modules with castors. Cushions upholstered in King Flex XFRM fabric.

Mediawalk:
multifunctional movable panel on castors, metal structure painted embossed white RAL 9010. White board and TV stand panel upholstered in King Flex XFB2 fabric.

Gradone:
modules base sur roulettes en mélamine orme clair. Coussins revêtus en tissu King Flex XFRM.

Mediawalk:
panneau mobile multifonctionnel sur roulettes, structure en métal verni gaufré blanc RAL 9010, tableau blanc et panneau porte monitor revêtu en tissu King Flex XFB2.



Bench:
 bench mobili su ruote. Struttura in metallo verniciato gofrato bianco RAL 9010 e piani in melaminico tortora.

Denzel:
 seduta operativa con schienale in rete Polo RPZO e tessuto Steelcut Trio 3 SYAZ.

Bench desk:
 movable bench desks on castors. Metal structure painted embossed white RAL 9010 and dove melamine tops.

Denzel:
 task chair with Polo RPZO mesh backrest and Steelcut Trio 3 SYAZ fabric.

Bureau double:
 bureaux doubles mobiles sur roulettes. Structure en métal verni gaufré blanc RAL 9010 et plateaux en mélamine gris taupe.

Denzel:
 siège bureau avec dossier en résille Polo RPZO et tissu Steelcut Trio 3 SYAZ.



Tavolo riunione:
 tavoli riunione mobili su ruote, struttura in metallo verniciato gofrato bianco RAL 9010, piani in melaminico tortora.

Yo Plastic:
 seduta multifunzione con monosocca in polipropilene colore L4R0 (RAL 050 50 60). Base a 5 razze in nylon bianco su ruote.

Meeting table:
 movable meeting tables on castors, metal structure painted embossed white RAL 9010 and dove melamine tops.

Yo Plastic:
 multipurpose chair with polypropylene unibody colour L4R0 (RAL 050 50 60). White nylon 5-star base on castors.

Table réunion:
 tables réunion mobiles sur roulettes, structure en métal verni gaufré RAL 9010, plateaux en mélamine gris taupe.

Yo Plastic:
 chaise polyvalente avec monocoque en polypropylène couleur L4R0 (RAL 050 50 60). Piètement à 5 branches en nylon blanc sur roulettes.



Scrivania:

scrivanie mobili su ruote, struttura in metallo verniciato goffrato bianco RAL 9010 e piani in melaminico tortora.

Yo Fabric:

seduta multifunzione rivestita in tessuto King Flex XFB2. Telaio a 4 gambe in acciaio verniciato goffrato bianco RAL 9010.

Desk:

movable desks on castors, metal structure painted embossed white RAL 9010 and dove melamine tops.

Yo Fabric:

multipurpose chair upholstered in King Flex XFB2 fabric. 4-leg steel frame painted embossed white RAL 9010.

Bureau:

bureaux mobiles sur roulettes, structure en métal verni gaufré blanc RAL 9010 et plateaux en mélamine gris taupe.

Yo Fabric:

chaise polyvalente revêtu en tissu King Flex XFB2. Bâti 4 pieds en acier verni gaufré blanc RAL 9010.





Nomad table bench:

bench mobile su ruote con struttura in metallo verniciato gofrato bianco RAL 9010, piani in melaminico tortora e schermo rivestito in tessuto King Flex XFB2.

Denzel:

seduta operativa con schienale in rete Polo RPZO e tessuto Steelcut Trio 3 SYAZ.

Nomad table bench desk:

movable bench desk on castors with metal structure painted embossed white RAL 9010, dove melamine tops and screen upholstered in King Flex XFB2 fabric.

Denzel:

task chair with Polo RPZO mesh backrest and Steelcut Trio 3 SYAZ fabric.

Nomad table bureau double:

bureau double mobile sur roulettes, structure en métal verni gaufré blanc RAL 9010, plateaux en mélamine gris taupe et panneau écran revêtu en tissu King Flex XFB2.

Denzel:

siège bureau avec dossier en résille Polo RPZO et tissu Steelcut Trio 3 SYAZ.



Nomad table:
tavolo alto mobile su ruote, struttura in metallo verniciato gofrato bianco RAL 9010, piano in melaminico tortora.

Yo Stool:
sgabello rivestito in tessuto King Flex XFRM. Telaio a slitta in metallo verniciato gofrato bianco RAL 9010.



Nomad table:
movable high table on castors, metal structure painted embossed white RAL 9010, dove melamine top.

Yo Stool:
stool upholstered in King Flex XFRM fabric. Cantilever frame painted embossed white RAL 9010.

Nomad table:
table haute mobile sur roulettes, structure en métal verni gaufré blanc RAL 9010, plateau en mélamine gris taupe.

Yo Stool:
tabouret revêtu en tissu King Flex XFRM. Piètement luge en métal verni gaufré blanc RAL 9010.



Nomad table:

tavolo mobile su ruote, struttura in metallo verniciato goffrato bianco RAL 9010 e piano in melaminico tortora. Pannello laterale puntinabile, rivestito in tessuto King Flex XFB2.

Denzel:

seduta operativa con schienale in rete Polo RPZO e tessuto Steelcut Trio 3 SYAZ.

Nomad table:

movable table on castors, metal structure painted embossed white RAL 9010 and dove melamine top. Pinnable side panel upholstered in King Flex XFB2 fabric.

Denzel:

task chair with Polo RPZO mesh backrest and Steelcut Trio 3 SYAZ fabric.

Nomad table:

table mobile sur roulettes, structure en métal verni gaufré blanc RAL 9010 et plateau en mélamine gris taupe. Panneau latéral pour pounaises, revêtu en tissu King Flex XFB2.

Denzel:

siège bureau avec dossier en résille Polo RPZO et tissu Steelcut Trio 3 SYAZ.

SCAN



See more about this project

FINITURE
FINISHES / FINITIONS

Struttura
Structure
Structure
Metallo
Metal / Métal



ZGBI
White embossed
painted RAL 9010



ZGG5
Green grey embossed
painted RAL 7009



ZGNE
Black embossed
painted RAL 9005

Piano con bordo a contrasto
Top with colour-contrasting edging
Plateau avec chants contrastée

Melaminico
Melamine / Mélamine



GMBI
White with green
grey edge



GMOB
Light elm with
green grey edge



NMBI
White with black
edge



NMOB
Light elm with
black edge



GMNE
Black with green
grey edge



GMNC
Walnut with green
grey edge



BMOB
Light elm with
white edge



NMNC
Walnut with black
edge

Gonna
Modesty panel
Voile de fond

Melaminico
Melamine / Mélamine



MBI
White



MOB
Light elm



MTR
Dove



MRO
Oak



MNE
Black



MNT
American walnut



MCE
Concrete
TEXTURED EFFECT



MNC
Walnut

Struttura
Structure
Structure
Metallo
Metal / Métal



ZGBI
White embossed
painted



ZGG5
Green grey
embossed painted



ZGNE
Black embossed
painted

Piano
Top
Plateau

Melaminico
Melamine / Mélamine



MBI
White



MOB
Light elm



MTR
Dove



MRO
Oak



MNE
Black



MNT
American walnut



MCE
Concrete
TEXTURED EFFECT



MNC
Walnut

Piano allungo
Return top
Plateau retour

Vetro + Melaminico
Glass + Melamine / Verre + Mélamine



VBI
Etched glass over
surface, white
painted under
surface



MBI
White



VNE
Etched glass over
surface, black
painted under
surface



MNE
Black



Struttura
Structure
Structure

Metallo
Metal / Métal



ZGBI
White embossed
painted RAL 9010



ZGG5
Green grey embossed
painted RAL 7009



ZGNE
Black embossed
painted RAL 9005

Piano
Top
Plateau

Melaminico
Melamine / Mélamine



MBI
White



MOB
Light elm



MTR
Dove



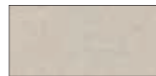
MRO
Oak



MNE
Black



MNT
American walnut



MCE
Concrete
TEXTURED EFFECT



MNC
Walnut

Flap
Top access
Top access

Metallo
Metal / Métal



BI
White RAL 9010



NE
Black RAL 9005

Piano con bordo a contrasto
Top with colour-contrasting edging
Plateau avec chants contrastée

Melaminico
Melamine / Mélamine



GMBI
White with green
grey edge



GMOB
Light elm with
green grey edge



NMBI
White with black
edge



NMOB
Light elm with
black edge



GMNE
Black with green
grey edge



GMNC
Walnut with green
grey edge



BMOB
Light elm with
white edge

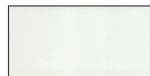


NMNC
Walnut with black
edge



Porta CPU
CPU holder
Porte CPU

Metallo
Metal / Métal



ZGBI
White embossed painted RAL 9010



ZGG5
Green grey embossed painted RAL 7009

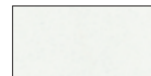


ZGNE
Black embossed painted RAL 9005

Schermo divisorio

Screen
Panneau écran

Melaminico
Melamine / Mélamine



MBI
White



MOB
Light elm

Vetro
Glass / Verre



VØC
Etched glass

Tessuto
Fabric / Tissu



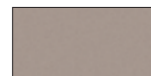
Cat. D
King Flex



Cat. F
Step



Cat. F
Jet



MTR
Dove



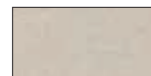
MRO
Oak



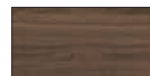
MNE
Black



MNT
American walnut



MCE
Concrete
TEXTURED EFFECT

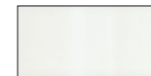


MNC
Walnut

Accessori

Accessories
Accessoires

Metallo
Metal / Métal



BI
White RAL 9010



NE
Black RAL 9005

Distanziale Library

Library spacer
Entretoise pour Library

Melaminico
Melamine / Mélamine



MBI
White



MNE
Black

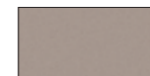
Library

Library
Library

Melaminico
Melamine / Mélamine



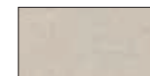
MBI
White



MTR
Dove



MNE
Black



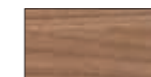
MCE
Concrete
TEXTURED EFFECT



MOB
Light elm



MRO
Oak



MNT
American walnut



MNC
Walnut

Contenitore

Container
Conteneur

Feltro
Felt / Feutre



GR
Grey



Struttura

Structure
Structure

Metallo
Metal / Métal



ZGBI
White embossed
painted RAL 9010



ZGG5
Green grey embossed
painted RAL 7009



ZGNE
Black embossed
painted RAL 9005

Pannello lavagna

Blackboard panel
Panneau de tableau noir

MDF scrivibile
Writable MDF / MDF à écrire



LVBI
White



LVNE
Black

Mensole

Shelves
Étagères

Metallo
Metal / Métal



ZGBI
White embossed
painted RAL 9010



ZGG5
Green grey embossed
painted RAL 7009



ZGNE
Black embossed
painted RAL 9005

Pannello rivestito in tessuto

Fabric upholstered panel
Panneau revêtu en tissu

Tessuto King Flex
King Flex fabric / Tissu King Flex



XFGC



XFYD



XFGS



XFYS



XFZ0



XFV1



XFML



XFB2



XFBX

Pannello porta TV

TV stand panel
Panneau porte monitor

Melaminico
Melamine / Mélamine



MBI
White



MOB
Light elm



MTR
Dove



MRO
Oak



MNE
Black



MNT
American walnut



MCE
Concrete
TEXTURED EFFECT



MNC
Walnut



Struttura
Structure
Structure

Metallo
Metal / Métal



ZGBI
White embossed
painted RAL 9010



ZGG5
Green grey embossed
painted RAL 7009



ZGNE
Black embossed
painted RAL 9005

Piano
Top
Plateau

Melaminico
Melamine / Mélamine



MBI
White



MOB
Light elm



MTR
Dove



MRO
Oak



MNE
Black



MNT
American walnut



MCE
Concrete
TEXTURED EFFECT



MNC
Walnut

Piano con bordo a contrasto
Top with colour-contrasting edging
Plateau avec chants contrastée

Melaminico
Melamine / Mélamine



GMBI
White with green
grey edge



GMOB
Light elm with
green grey edge



NMBI
White with black
edge



NMOB
Light elm with
black edge



GMNE
Black with green
grey edge



GMNC
Walnut with green
grey edge



BMOB
Light elm with
white edge



NMNC
Walnut with black
edge

Schermo divisorio
Screen
Panneau écran

Melaminico
Melamine / Mélamine



MBI
White



MOB
Light elm



MTR
Dove



MRO
Oak



MNE
Black



MNT
American walnut



MCE
Concrete
TEXTURED EFFECT



MNC
Walnut

Tessuto
Fabric / Tissu



Cat. D
King Flex



Cat. F
Step



Cat. F
Jet

Schermo laterale
Side screen
Panneau écran latéral

Melaminico
Melamine / Mélamine



MBI
White



MOB
Light elm



MTR
Dove



MRO
Oak



MNE
Black



MNT
American walnut



MCE
Concrete
TEXTURED EFFECT



MNC
Walnut

MDF scrivibile
Writable MDF / MDF à écrire



LVBI
White



LVNE
Black

Tessuto
Fabric / Tissu



Cat. D
King Flex



Cat. F
Step



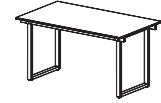
Cat. F
Jet



DATI TECNICI

TECHNICAL DATA / DONNÉES TECHNIQUES

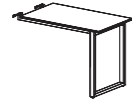
scrivania
desk
bureau



CRB0512 L 120 P 80 H74
CRB0514 L 140 P 80 H74
CRB0516 L 160 P 80 H74
CRB0518 L 180 P 80 H74
CRB0520 L 200 P 80 H74

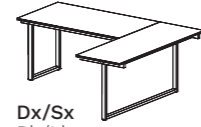
CRB0408 L 80 P 60 H74
CRB0410 L 100 P 60 H74
CRB0412 L 120 P 60 H74
CRB0414 L 140 P 60 H74
CRB0416 L 160 P 60 H74

allungo appeso
hanging return
retour suspendu



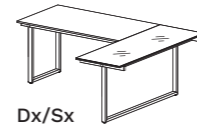
CRB01408 L 80 P 60 H74
CRB01410 L 100 P 60 H74
CRB01412 L 120 P 60 H74

scrivania manageriale
managerial desk
bureau semi-direction



Dx/Sx
Rh/Lh

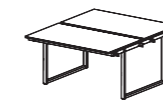
CRB0718 (120+60) L 180 P 165 H74
CRB0720 (140+60) L 200 P 165 H74
CRB0722 (160+60) L 220 P 165 H74



Dx/Sx
Rh/Lh

CRB0718X (120+60) L 180 P 165 H74
CRB0720X (140+60) L 200 P 165 H74
CRB0722X (160+60) L 220 P 165 H74

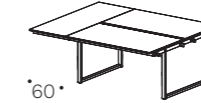
bench iniziale 2 posti
2 persons initial bench desk
bureau double initial



CRB6512B L 120 P 165 H74
CRB6514B L 140 P 165 H74
CRB6516B L 160 P 165 H74
CRB6518B L 180 P 165 H74
CRB6520B L 200 P 165 H74

CRB6312B L 120 P 125 H74
CRB6314B L 140 P 125 H74
CRB6316B L 160 P 125 H74
CRB6318B L 180 P 125 H74

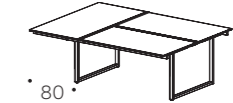
bench iniziale 3 posti - Est. P. 60 cm
3 persons initial bench desk - D. 23"5/8 ext.
bureau initial 3 postes - Ext. P. 60 cm



CRB6522B L 180 P 165 H74
CRB6524B L 200 P 165 H74
CRB6526B L 220 P 165 H74
CRB6528B L 240 P 165 H74
CRB6530B L 260 P 165 H74

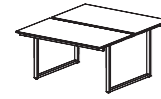
CRB6322B L 180 P 125 H74
CRB6324B L 200 P 125 H74
CRB6326B L 220 P 125 H74
CRB6328B L 240 P 125 H74

bench iniziale 3 posti - Est. P. 80 cm
3 persons initial bench desk - D. 31"1/2 ext.
bureau initial 3 postes - Ext. P. 80 cm



CRB6542B L 205 P 165 H74
CRB6544B L 225 P 165 H74
CRB6546B L 245 P 165 H74
CRB6548B L 265 P 165 H74
CRB6550B L 285 P 165 H74

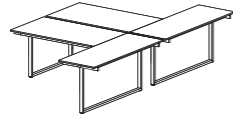
bench 2 posti
2 persons bench desk
bureau double



CRB4512 L 120 P 165 H74
CRB4514 L 140 P 165 H74
CRB4516 L 160 P 165 H74
CRB4518 L 180 P 165 H74
CRB4520 L 200 P 165 H74

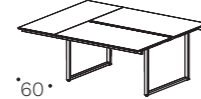
CRB4412 L 120 P 125 H74
CRB4414 L 140 P 125 H74
CRB4416 L 160 P 125 H74
CRB4418 L 180 P 125 H74

bench 2 posti con allungo
2 persons bench desk with return top
bureau 2 postes avec retour



CRB4572 L 180 P 335 H74
CRB4574 L 200 P 335 H74
CRB4576 L 220 P 335 H74

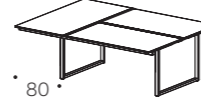
bench 3 posti - Est. P. 60 cm
3 persons bench desk - D. 23"5/8 ext.
bureau 3 postes - Ext. P. 60 cm



CRB4522 L 180 P 165 H74
CRB4524 L 200 P 165 H74
CRB4526 L 220 P 165 H74
CRB4528 L 240 P 165 H74
CRB4530 L 260 P 165 H74

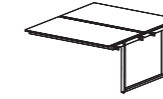
CRB4422 L 180 P 125 H74
CRB4424 L 200 P 125 H74
CRB4426 L 220 P 125 H74
CRB4428 L 240 P 125 H74

bench 3 posti - Est. P. 80 cm
3 persons bench desk - D. 31"1/2 ext.
bureau 3 postes - Ext. P. 80 cm



CRB4532 L 205 P 165 H74
CRB4534 L 225 P 165 H74
CRB4536 L 245 P 165 H74
CRB4538 L 265 P 165 H74
CRB4540 L 285 P 165 H74

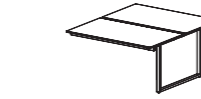
bench intermedio 2 posti
2 persons intermediate bench desk
bureau double intermédiaire



CRB6512I L 120 P 165 H74
CRB6514I L 140 P 165 H74
CRB6516I L 160 P 165 H74
CRB6518I L 180 P 165 H74
CRB6520I L 200 P 165 H74

CRB6312I L 120 P 125 H74
CRB6314I L 140 P 125 H74
CRB6316I L 160 P 125 H74
CRB6318I L 180 P 125 H74

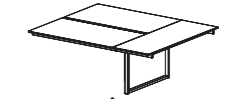
bench finale 2 posti
2 persons final bench desk
bureau double final



CRB6512F L 120 P 165 H74
CRB6514F L 140 P 165 H74
CRB6516F L 160 P 165 H74
CRB6518F L 180 P 165 H74
CRB6520F L 200 P 165 H74

CRB6312F L 120 P 125 H74
CRB6314F L 140 P 125 H74
CRB6316F L 160 P 125 H74
CRB6318F L 180 P 125 H74

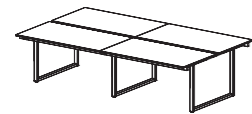
bench finale 3 posti - Est. P. 60 cm
3 persons final bench desk - D. 23"5/8 ext.
bureau final 3 postes - Ext. P. 60 cm



CRB6522F L 180 P 165 H74
CRB6524F L 200 P 165 H74
CRB6526F L 220 P 165 H74
CRB6528F L 240 P 165 H74
CRB6530F L 260 P 165 H74

CRB6322F L 180 P 125 H74
CRB6324F L 200 P 125 H74
CRB6326F L 220 P 125 H74
CRB6328F L 240 P 125 H74

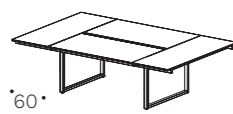
bench 4 posti
4 persons bench desk
bureau 4 postes



CRB4562 L 240 P 165 H74
CRB4564 L 280 P 165 H74
CRB4566 L 320 P 165 H74
CRB4568 L 360 P 165 H74
CRB4570 L 400 P 165 H74

CRB4462 L 240 P 125 H74
CRB4464 L 280 P 125 H74
CRB4466 L 320 P 125 H74
CRB4468 L 360 P 125 H74

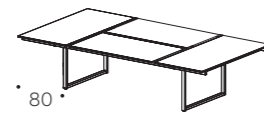
bench 4 posti - Est. P. 60 cm
4 persons bench desk - D. 23"5/8 ext.
bureau 4 postes - Ext. P. 60 cm



CRB4542 L 240 P 165 H74
CRB4544 L 260 P 165 H74
CRB4546 L 280 P 165 H74
CRB4548 L 300 P 165 H74

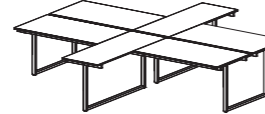
CRB4442 L 240 P 125 H74
CRB4444 L 260 P 125 H74
CRB4446 L 280 P 125 H74

bench 4 posti - Est. P. 80 cm
4 persons bench desk - D. 31"1/2 ext.
bureau 4 postes - Ext. P. 80 cm



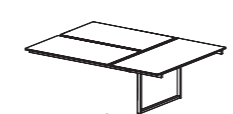
CRB4552 L 290 P 165 H74
CRB4554 L 310 P 165 H74
CRB4556 L 330 P 165 H74
CRB4558 L 350 P 165 H74

bench 4 posti con allungo
4 persons bench desk with return
bureau 4 postes avec retour



CRB4582 L 300 P 335 H74
CRB4584 L 340 P 335 H74
CRB4586 L 380 P 335 H74

bench finale 3 posti - Est. P. 80 cm
3 persons final bench desk - D. 31"1/2 ext.
bureau final 3 postes - Ext. P. 80 cm



CRB6542F L 205 P 165 H74
CRB6544F L 225 P 165 H74
CRB6546F L 245 P 165 H74
CRB6548F L 265 P 165 H74
CRB6550F L 285 P 165 H74

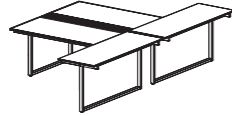


RIBA - bench 2 posti
RIBA - 2 persons bench desk
RIBA - bureau double



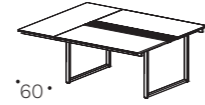
CRB4712 L 120 P 165 H 74
CRB4714 L 140 P 165 H 74
CRB4716 L 160 P 165 H 74
CRB4718 L 180 P 165 H 74
CRB4720 L 200 P 165 H 74

RIBA - bench 2 posti con allungo
RIBA - 2 persons bench desk with return
RIBA - bureau double avec retour



CRB4772 L 180 P 335 H 74
CRB4774 L 200 P 335 H 74
CRB4776 L 220 P 335 H 74

RIBA - bench 3 posti - Est. P. 60 cm
*RIBA - 3 persons bench desk - D. 23*5/8 ext.*
RIBA - bureau 3 postes - Ext. P. 60 cm



CRB4722 L 180 P 165 H 74
CRB4724 L 200 P 165 H 74
CRB4726 L 220 P 165 H 74
CRB4728 L 240 P 165 H 74
CRB4730 L 260 P 165 H 74

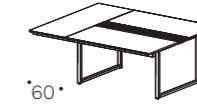


RIBA - bench iniziale 2 posti
RIBA - 2 persons initial bench desk
RIBA - bureau double initial



CRB8512B L 120 P 165 H 74
CRB8514B L 140 P 165 H 74
CRB8516B L 160 P 165 H 74
CRB8518B L 180 P 165 H 74
CRB8520B L 200 P 165 H 74

RIBA - bench iniziale 3 posti - Est. P. 60 cm
*RIBA - 3 persons initial bench desk - D. 23*5/8 ext.*
RIBA - bureau initial 3 postes - Ext. P. 60 cm



CRB8522B L 180 P 165 H 74
CRB8524B L 200 P 165 H 74
CRB8526B L 220 P 165 H 74
CRB8528B L 240 P 165 H 74
CRB8530B L 260 P 165 H 74

RIBA - bench 3 posti - Est. P. 80 cm
*RIBA - 3 persons initial bench desk - D. 31*1/2 ext.*
RIBA - bureau initial 3 postes - Ext. P. 80 cm



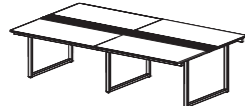
CRB8542B L 205 P 165 H 74
CRB8544B L 225 P 165 H 74
CRB8546B L 245 P 165 H 74
CRB8548B L 265 P 165 H 74
CRB8550B L 285 P 165 H 74

RIBA - bench 3 posti - Est. P. 80 cm
*RIBA - 3 persons bench desk - D. 31*1/2 ext.*
RIBA - bureau 3 postes - Ext. P. 80 cm



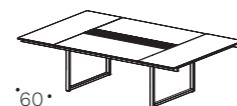
CRB4732 L 205 P 165 H 74
CRB4734 L 225 P 165 H 74
CRB4736 L 245 P 165 H 74
CRB4738 L 265 P 165 H 74
CRB4740 L 285 P 165 H 74

RIBA - bench 4 posti
RIBA - 4 persons bench desk
RIBA - bureau 4 postes



CRB4762 L 240 P 165 H 74
CRB4764 L 280 P 165 H 74
CRB4766 L 320 P 165 H 74
CRB4768 L 360 P 165 H 74
CRB4770 L 400 P 165 H 74

RIBA - bench 4 posti - Est. P. 60 cm
*RIBA - 4 persons bench desk - D. 23*5/8 ext.*
RIBA - bureau 4 postes - Ext. P. 60 cm



CRB4742 L 240 P 165 H 74
CRB4744 L 260 P 165 H 74
CRB4746 L 280 P 165 H 74
CRB4748 L 300 P 165 H 74

RIBA - bench intermedio 2 posti
RIBA - 2 persons intermediate bench desk
RIBA - bureau double intermédiaire



CRB8512I L 120 P 165 H 74
CRB8514I L 140 P 165 H 74
CRB8516I L 160 P 165 H 74
CRB8518I L 180 P 165 H 74
CRB8520I L 200 P 165 H 74

RIBA - bench finale 2 posti
RIBA - 2 persons final bench desk.
RIBA - bureau double final



CRB8512F L 120 P 165 H 74
CRB8514F L 140 P 165 H 74
CRB8516F L 160 P 165 H 74
CRB8518F L 180 P 165 H 74
CRB8520F L 200 P 165 H 74

RIBA - bench finale 3 posti - Est. P. 60 cm
*RIBA - 3 persons final bench desk - D. 23*5/8 ext.*
RIBA - bureau 3 postes final - Ext. P. 60 cm



CRB8522F L 180 P 165 H 74
CRB8524F L 200 P 165 H 74
CRB8526F L 220 P 165 H 74
CRB8528F L 240 P 165 H 74
CRB8530F L 260 P 165 H 74

RIBA - bench 4 posti - Est. P. 80 cm
*RIBA - 4 persons bench desk - D. 31*1/2 ext.*
RIBA - bureau 4 postes - Ext. P. 80 cm



CRB4752 L 290 P 165 H 74
CRB4754 L 310 P 165 H 74
CRB4756 L 330 P 165 H 74
CRB4758 L 350 P 165 H 74

RIBA - bench 4 posti con allungo intermedio
RIBA - 4 persons bench desk with intermediate return
RIBA - bureau 4 postes avec retour intermediaire



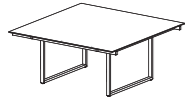
CRB4782 L 300 P 335 H 74
CRB4784 L 340 P 335 H 74
CRB4786 L 380 P 335 H 74

RIBA - bench finale 3 posti - Est. P. 80 cm
*RIBA - 3 persons final bench desk - D. 31*1/2 ext.*
RIBA - bureau 3 postes final - Ext. P. 80 cm



CRB8542F L 205 P 165 H 74
CRB8544F L 225 P 165 H 74
CRB8546F L 245 P 165 H 74
CRB8548F L 265 P 165 H 74
CRB8550F L 285 P 165 H 74

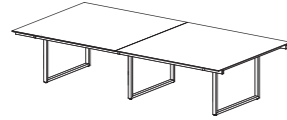
Tavolo riunione in melaminico
Melamine meeting table
Table réunion en mélamine



CRB1617 L 165 P 165 H74

CRB1622 L 220 P 125 H74

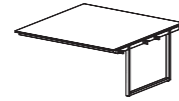
Tavolo riunione modulare in melaminico
Melamine modular meeting table
Table réunion modulaire en mélamine



CRB1653 L 330 P 165 H74

CRB1664 L 440 P 125 H74

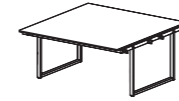
Modulo intermedio in melaminico per tavolo riunione
Intermediate melamine module for meeting table
Module intermédiaire en mélamine pour table réunion



CRB3617 L 165 P 165 H74

CRB3614 L 140 P 125 H74
CRB3616 L 160 P 125 H74
CRB3622 L 220 P 125 H74

Modulo iniziale per tavolo riunione
Initial module for meeting table
Module initial pour table réunion



CRB2617 L 165 P 165 H74

CRB2614 L 140 P 125 H74
CRB2616 L 160 P 125 H74
CRB2622 L 220 P 125 H74

Modulo iniziale per tavolo riunione - Est. P. 60 cm
Initial module for meeting table - D. 23"5/8 ext.
Module initial pour table réunion - Ext. P. 60 cm



CRB2633 L 225 P 165 H74

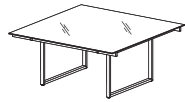
CRB2630 L 200 P 125 H74
CRB2632 L 220 P 125 H74
CRB2638 L 280 P 125 H74

Modulo iniziale per tavolo riunione - Est. P. 60 cm
Initial module for meeting table - D. 23"5/8 ext.
Module initial pour table réunion - Ext. P. 60 cm



CRB2633X L 225 P 165 H74

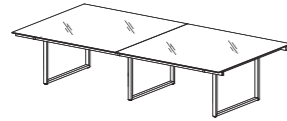
Tavolo riunione in vetro
Glass meeting table
Table réunion en verre



CRB1617V L 165 P 165 H74

CRB1622V L 220 P 125 H74

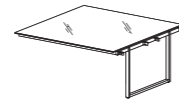
Tavolo riunione modulare in vetro
Glass modular meeting table
Table réunion modulaire en verre



CRB1653V L 330 P 165 H74

CRB1664V L 440 P 125 H74

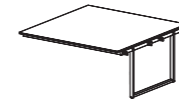
Modulo intermedio in vetro per tavolo riunione
Intermediate glass module for meeting table
Module intermédiaire en verre pour table réunion



CRB3617V L 165 P 165 H74

CRB3622V L 220 P 125 H74

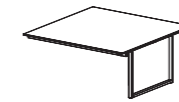
Modulo intermedio per tavolo riunione
Intermediate module for meeting table
Module intermédiaire pour table réunion



CRB3617 L 165 P 165 H74

CRB3614 L 140 P 125 H74
CRB3616 L 160 P 125 H74
CRB3622 L 220 P 125 H74

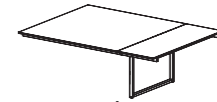
Modulo finale per tavolo riunione
Final module for meeting table
Module final pour table réunion



CRB4617 L 165 P 165 H74

CRB4614 L 140 P 125 H74
CRB4616 L 160 P 125 H74
CRB4622 L 220 P 125 H74

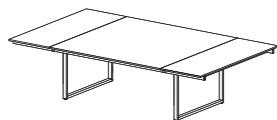
Modulo finale per tavolo riunione - Est. P. 60 cm
Final module for meeting table - D. 23"5/8 ext.
Module final pour table réunion - Ext. P. 60 cm



CRB4633 L 225 P 165 H74

CRB4630 L 200 P 125 H74
CRB4632 L 220 P 125 H74
CRB4638 L 280 P 125 H74

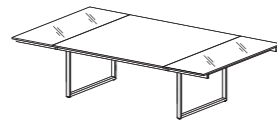
Tavolo riunione - Est. P. 60 cm
Meeting table - D. 23"5/8 ext.
Table réunion - Ext. P. 60 cm



CRB1639 L 285 P 165 H74

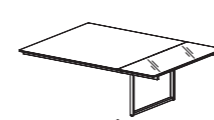
CRB1636 L 260 P 125 H74
CRB1638 L 280 P 125 H74
CRB1644 L 340 P 125 H74

Tavolo riunione - Est. P. 60 cm
Meeting table - D. 23"5/8 ext.
Table réunion - Ext. P. 60 cm



CRB1639X L 285 P 165 H74

Modulo finale per tavolo riunione - Est. P. 60 cm
Final module for meeting table - D. 23"5/8 ext.
Module final pour table réunion - Ext. P. 60 cm



CRB4633X L 225 P 165 H74

Nomad table H. 189 cm con ruote
H. 74"3/8 Nomad table with castors
Nomad table Ht. 189 cm avec roulettes



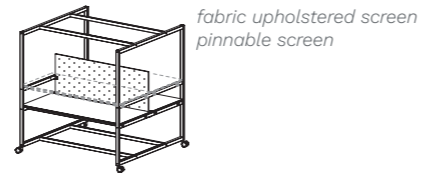
CRN0532 L 220 P 96 H189

Nomad table bench H. 189 cm con ruote
H. 74"3/8 Nomad table bench with castors
Nomad table bureau double Ht. 189 cm avec roulettes



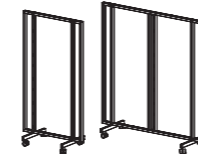
CRN4816 L 160 P 172 H189
CRN4818 L 180 P 172 H189

Nomad table bench H. 189 cm con ruote
H. 74"3/8 Nomad table bench with castors
Nomad table bureau double Ht. 189 cm avec roulettes



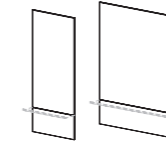
CRN4816 L 160 P 172 H189
CRN4818 L 180 P 172 H189

Mediawalk - struttura
Mediawalk - structure
Mediawalk - structure



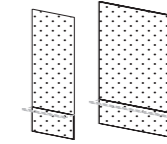
CRMS110 L 100 P 54 H189
CRMS117 L 170 P 54 H189

Pannelli di finitura in melaminico
Melamine finishing panels
Panneaux de finition en mélamine



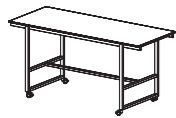
CRMP107 L 70 P 1,8 H176
CRMP114 L 140 P 1,8 H176

Pannelli di finitura rivestiti in tessuto - Puntinabile
Fabric upholstered finishing panels - Pinnable
Panneaux de finition revêtus en tissu - Pour pounaises



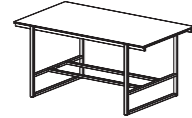
CRMP107T L 70 P 2 H176
CRMP114T L 140 P 2 H176

Nomad table H. 105 cm con ruote
H. 41"3/8 Nomad table with castors
Nomad table Ht. 105 cm avec roulettes



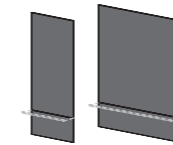
CRN0522 L 220 P 90 H105

Tavolo alto H. 105 cm
H. 41"3/8 high table
Table haute Ht. 105 cm



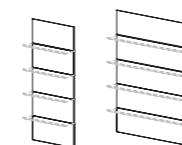
CRB1668 L 180 P 165 H74
CRB1670 L 200 P 165 H74
CRB1672 L 220 P 165 H74

Pannelli di finitura in MDF scrivibile
Writable MDF finishing panels
Panneaux de finition en MDF à écrire



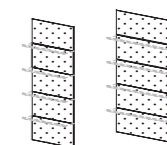
CRMP107 L 70 P 1,9 H176
CRMP114 L 140 P 1,9 H176

Pannelli di finitura in melaminico per mensole
Melamine finishing panels for shelves
Panneaux de finition en mélamine pour étagères



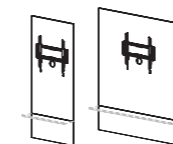
CRMP307 L 70 P 1,8 H176
CRMP314 L 140 P 1,8 H176

Pannelli di finitura rivestiti in tessuto per mensole
Fabric upholstered finishing panels for shelves
Panneaux de finition revêtus en tissu pour étagères



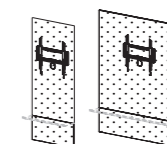
CRMP307T L 70 P 2 H176
CRMP314T L 140 P 2 H176

Pannelli di finitura porta TV in melaminico
Melamine TV holder finishing panels
Panneaux de finition porte moniteur en mélamine



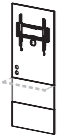
CRMP407 L 70 P 1,8 H176
CRMP414 L 140 P 1,8 H176

Pannelli di finitura porta TV rivestiti in tessuto
Fabric upholstered TV holder finishing panels
Panneaux de finition porte moniteur revêtus en tissu



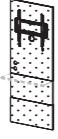
CRMP407T L 70 P 1,8 H176
CRMP414T L 140 P 1,8 H176

Pannelli di finitura porta TV in melaminico
Per mensola porta laptop
*Melamine TV holder finishing panels
For laptop shelf
Panneaux de finition porte moniteur en mélamine
Pour étagère pour support d'ordinateur portable*



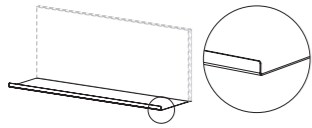
CRMP207 L 70 P 1,8 H176

Pannelli di finitura porta TV rivestiti in tessuto
Per mensola porta laptop
*Fabric upholstered TV holder finishing panels
For laptop shelf
Panneaux de finition porte moniteur revêtu en tissu
Pour étagère pour support d'ordinateur portable*



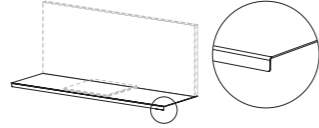
CRMP207T L 70 P 2 H176

Mensola in metallo
*Metal shelf
Étagère en métal*



CRMM107 L 70 P 21 H2
CRMM114 L 140 P 21 H2

Mensola in metallo porta laptop
*Metal shelf for laptop support
Étagère en métal pour support d'ordinateur portable*



CRMM207 L 70 P 24 H2